



**Infrastructure
Services**

Road Construction

Construction Works

Industrial Buildings

Assisted Services

**Constructing
A Safer
Future**



ELEKTRİK SOSYAL HİZMETLER TAAHHÜT TİC. LTD. ŞTİ.

'Our strength is our quality'

ABOUT US

The Company's services encompass industrial buildings, industrial parks, building renewals in Marmara Region intensively, since 1996. The company has a contractor engagement with Hyundai Assan for 25 years. Also contractor engagements with Ege Kimya and Egesil are continued.

The Company's services include industrial buildings, infrastructure and superstructure projects of factories, steel constructions, landspacing, roof panel systems, isolation, field concrete, installation and management of electrical systems, construction mechanic jobs and asphalt road constructions.

OUR MISSION

To build modern construction projects through innovative perspectives, respect for the environment and the human life.

To invest in the future through producing safe, high-quality, and cost-effective projects with forward thinking perspective and the expert staff.

With that mission, The Arıcan Family add value to the sector and the country and build trust.

OUR VISION

To be a company that protecting natural balance,adding value, enhancing standarts, innovator, competitive, building trust.

With that vision, The Arıcan Family follows the country's vision and works for being a national and international leading company with its projects.

NELER YAPTIK?

SAKARYA TOPÇA KAVŞAĞI



SAKARYA - ERENLER

Within the scope of the project, an asphalt cutting machine was used to cut asphalt surfaces. Plentmix, Bituminous foundation and hot-mix asphalt placed, spread and compacted works were done. In the project, that contracted by 1st Regional Directorate, trimmer and permanent way materials transportation works were done by GCO.



HYUNDAI ASSAN 3D SCANNER ROOM PROJECT





ELEKTRİK SOSYAL HİZMETLER TAAHHÜT TİC. LTD. ŞTİ.

'Our strength is our quality'

HYUNDAİ ASSAN UTILITY DEPO BİNASI



ASIM KIBAR OIZ TREATMENT FACILITY





ELEKTRİK SOSYAL HİZMETLER TAAHHÜT TİC. LTD. ŞTİ.

'Our strength is our quality'

EGESİL - EGE KİMYA 40KT TESİSİ



NELER YAPTIK?

**KARTEPE - BAŞISKELE - GÖLCÜK - KARAMÜRSEL İLÇELERİ
YOL ÜST YAPI İŞLERİ
2016 - 2017 - 2018**

KOCAELİ



HYUNDAI ASSAN YENİ KANTAR PROJESİ





ELEKTRİK SOSYAL HİZMETLER TAAHHÜT TİC. LTD. ŞTİ.
Our strength is our quality

HYUNDAİ ASSAN CANOPY





ELEKTRİK SOSYAL HİZMETLER TAAAHHÜT TİC. LTD. ŞTİ.

"Kalitemiz bizim gücümüz"



■ **GÜÇLÜ TEKNİK BİLGİ VE TECRÜBE**

■ **MINIMUM RISK MAKSİMUM KALİTE**

■ **EN KISA SÜREDE EN İYİ ÇÖZÜM**

■ **YENİLENEREK BÜYÜYEN BİR YAPI**

HYUNDAİ ASSAN PAINT SHOP AIR PLATFORM





ELEKTRİK SOSYAL HİZMETLER TAAHHÜT TİC. LTD. ŞTİ.

'Our strength is our quality'

HYUNDAI ASSAN ENERGY PLATFORM CONSTRUCTION



YÜZBİNLERCE TON ASFALT, KILOMETRELERCE YOL...

Yol inşaatının her aşamasında pratik, ekonomik, kaliteli işler için varız..

ANKARA POLATLI YOUTH CENTER





ELEKTRİK SOSYAL HİZMETLER TAAHHÜT TİC. LTD. ŞTİ.

'Our strength is our quality'

GÖLCÜK BELEDİYESİ YAZLIK KÜLTÜR MERKEZİ



NELER YAPTIK?

FORE KAZIK - ZEMİN İYİLEŞTİRME İŞLERİ

GEBZE

Within a Factory building's ground improvement project, that is located 10.000m² area, 7.700 meter bored pile was manufactured.

The project has done before the time of delivery.

EMPLOYER : Nevsaç

CONTRACTOR : Özergil İnşaat

BAŞ İSKELE

The bored pile application has done under the control of the company. Retaining wall on bored piles are constructed.



NELER YAPTIK?

ÖMER TÜRKÇAKAL BULVARI KÖPRÜ GENİŞLETME VE ÜSTYAPI İŞİ

KOCAELİ - İZMİT



GEBZE BELEDİYESİ SEMT KONAĞI İNŞASI

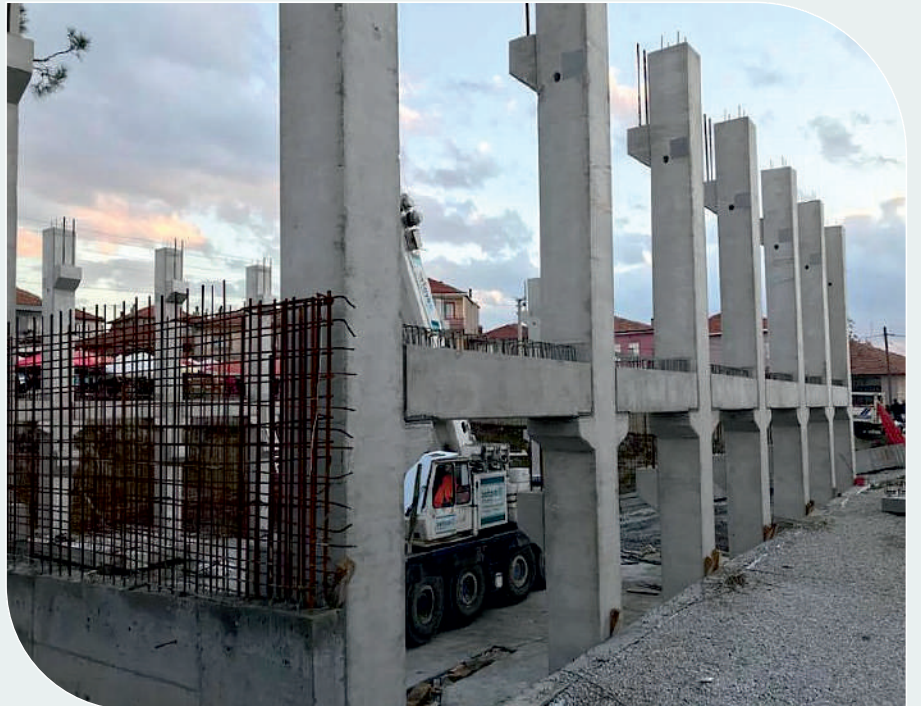




ELEKTRİK SOSYAL HİZMETLER TAAHHÜT TİC. LTD. ŞTİ.

'Our strength is our quality'

BALIKESİR BÜYÜKŞEHİR BELEDİYESİ SAVAŞTEPE DÜĞÜN SALONU



DIĞER HİZMETLERİMİZ

YOL ALT YAPISI VE ÜST YAPISININ HER AŞAMASINDA
GÇÖ VAR..

Arıcan
İNŞAAT

ELEKTRİK SOSYAL HİZMETLER YAAHHÜT TİC. LTD. ŞTİ.

"Kalitenin bizon gücünü"

KBB SYNTHETIC ICE RINK AND SKATE PARK



NELER YAPTIK?

OTOPARKLAR - FABRİKA SAHALARI
PARK ALANLARI - BASKETBOL SAHALARI

KOCAELİ

On a logistic zone, approximately 35.000m² area in Başiskele, ground improvement, plant mix base and asphalt paving works has done.

Asphalt paving works of traffic park for children, that was contracted by Gökbeyaz İnşaat and was made tender by Başiskele municipality, has done.

On the company's region, lots of factories' indoor and outdoor asphalt paving works have done.

Sports areas like basketbool courts were surfaced and painted. A lot of speed bumps were installed around factory areas and organized industrial zones.





ELEKTRİK SOSYAL HİZMETLER TAAHHÜT TİC. LTD. ŞTİ.

'Our strength is our quality'



**Körfez Mh. Birleşim İş Merkezi
Kat:4 Daire:408 İzmit / KOCAELİ**



arican@aricaninsaat.com



www.aricaninsaat.com



**Tel:0 (0262) 324 93 15
Gsm: 0 533 364 78 90**